



**II-TED**  
International Institute for  
Teacher Education and Development

**HUBBLEHOX**<sup>®</sup>  
LEARN • EARN • GROW

# AI FOR EDUCATORS

Empowering Classrooms with Responsible, Practical AI

Offered by International Institute for Teacher  
Education & Development (II-TED)



# TABLE OF CONTENTS



01 Core Competencies You Will Master

---

02 Programme Overview

---

03 Why Choose AI for Educators?

---

04 Program Structure

---

05 Tools & Platforms Covered

---

06 Certification & Credential Details

---

07 Programme Fee & Enrollment Details

---

08 Frequently Asked Questions

# CORE COMPETENCIES YOU WILL MASTER



## AI Literacy for Educators

Understand AI, Generative AI, LLMs, and Prompt Engineering within educational contexts.



## Personalised Learning Design

Create adaptive and differentiated learning experiences using AI-powered tools.



## AI-Driven Lesson & Curriculum Planning

Develop lesson plans, assessments, and instructional content responsibly using AI.



## Responsible & Ethical AI Practice

Evaluate bias, privacy, misinformation, and fairness in AI outputs.



## Data-Informed Decision Making

Use AI insights to improve student performance, feedback, and instructional quality.



## Professional Growth with AI

Leverage AI for career advancement, portfolio development, and digital presence.

# PROGRAMME OVERVIEW



The AI for Educators programme is a 21-hour structured micro-credential course designed to equip educators with practical AI integration skills for teaching, assessment, classroom management, and professional development.

This certification enables educators to confidently integrate AI into real classroom environments while maintaining ethical and pedagogical integrity.

## The Programme Includes:

3 Structured  
Modules

3 Live Expert  
Webinars

4 Assessments

4 Applied  
Practicum Tasks

LMS-Based  
Learning Access

Hands-on AI Tool  
Exposure

# WHY CHOOSE AI FOR EDUCATORS?



Designed exclusively for education professionals



Strong ethical and compliance framework aligned with NEP 2020



Practical, hands-on classroom application



Exposure to leading AI tools and platforms



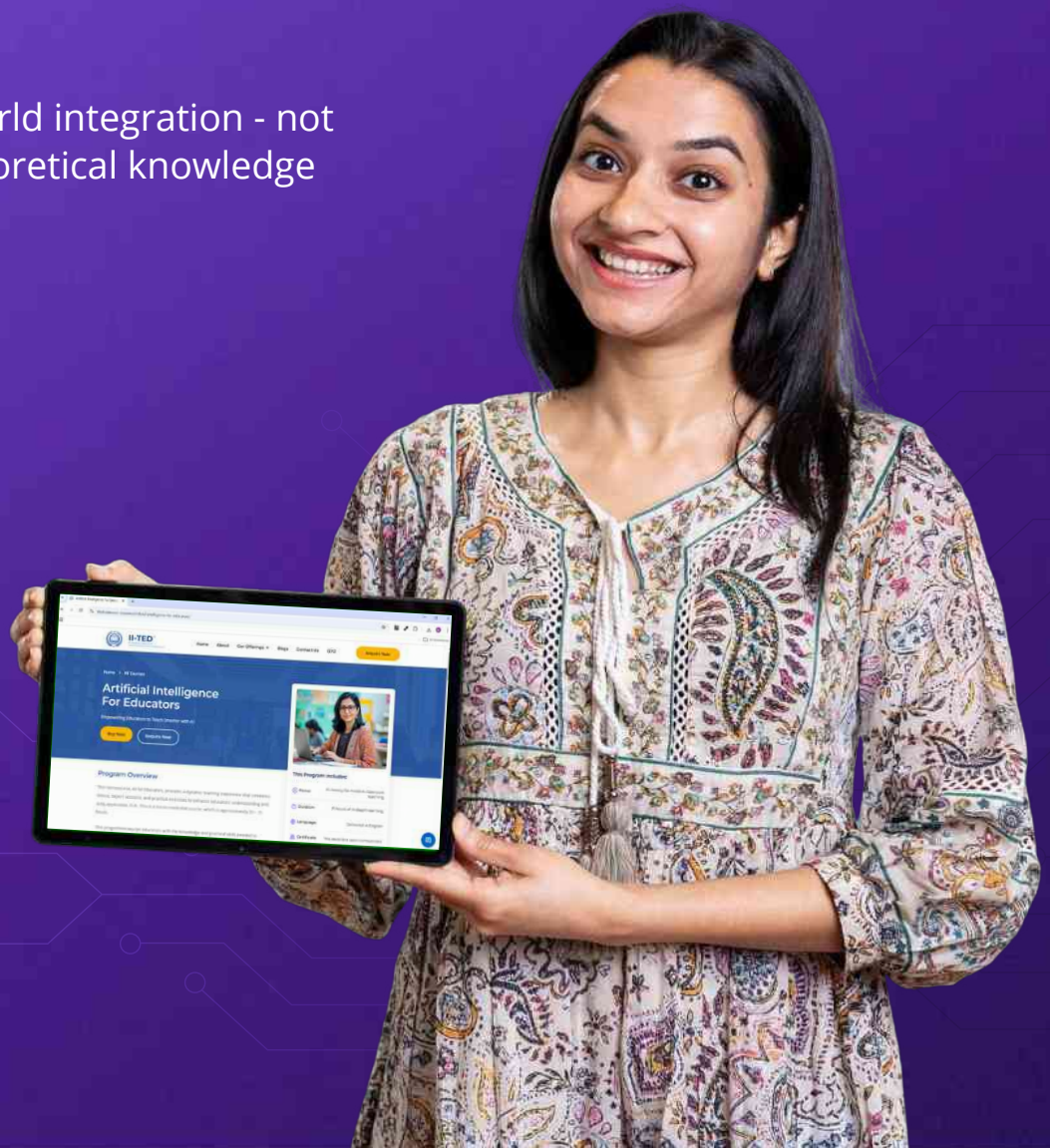
Blended format suitable for working professionals



Structured evaluation and academic credit recognition



Real-world integration - not just theoretical knowledge



# PROGRAM STRUCTURE

3 Modules | 21 Hours | Blended Delivery

## Module 1

### Foundations & Responsible AI in Education

- AI & generative AI fundamentals
- Ethical risks: bias, privacy, misinformation
- AI for lesson planning and assessments
- AI in communication and reporting

## Module 2

### AI in the Classroom

- Prompt engineering for educators
- Subject-specific AI integration
- Curriculum planning & instructional design
- AI for multimedia content creation
- AI for differentiated learning
- AI for evaluation and feedback

## Module 3

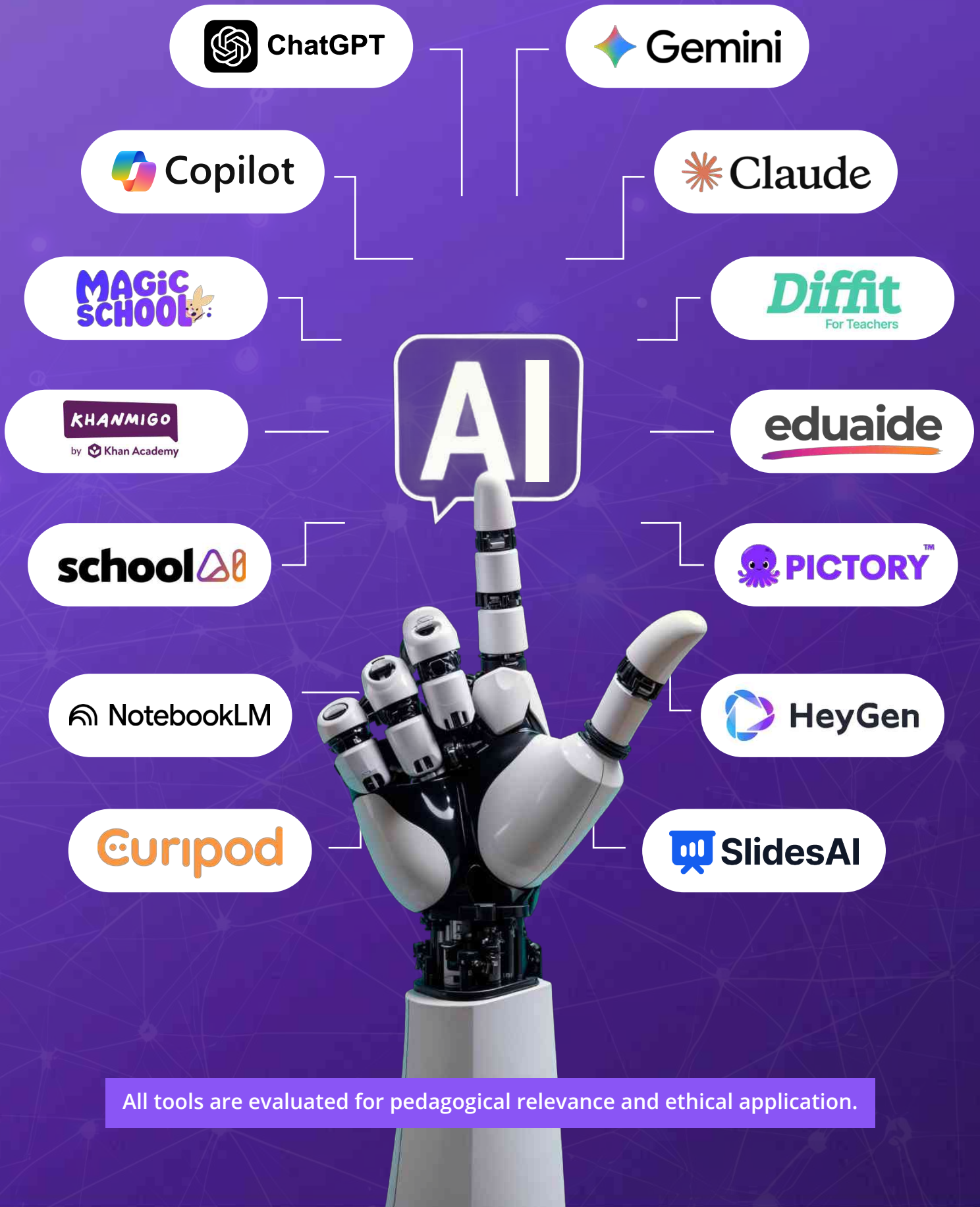
### AI Classroom & Beyond

- AI for professional development
- Building digital presence
- AI for resume and interview preparation
- Guiding students in responsible AI usage



# TOOLS AND PLATFORMS COVERED

Participants gain structured exposure to:



All tools are evaluated for pedagogical relevance and ethical application.

# CERTIFICATION & CREDENTIAL DETAILS

Upon successful completion of all modules, assessments, and practicum tasks, participants will receive a formal certificate:



Awarded by the  
International Institute for Teacher Education & Development (II-TED)

## CERTIFICATION HIGHLIGHTS:

Recognised 1  
Credit Micro-Credential

Digital Verifiable  
Certificate

Aligned with NEP 2020 and  
Global AI Literacy Standards

Performance-Based  
Evaluation

Strong Addition to  
Professional Portfolio

# PROGRAMME FEE & ENROLLMENT DETAILS

**Launch Offer Fee: ₹3,999**

**Standard Fee: ₹8,000**

## FREQUENTLY ASKED QUESTIONS

**Do I need any prior knowledge of Artificial Intelligence or a technical background to start this course?**

No, you don't need any prior knowledge of Artificial Intelligence or a technical background.

**How should I plan my time to complete all three modules effectively?**

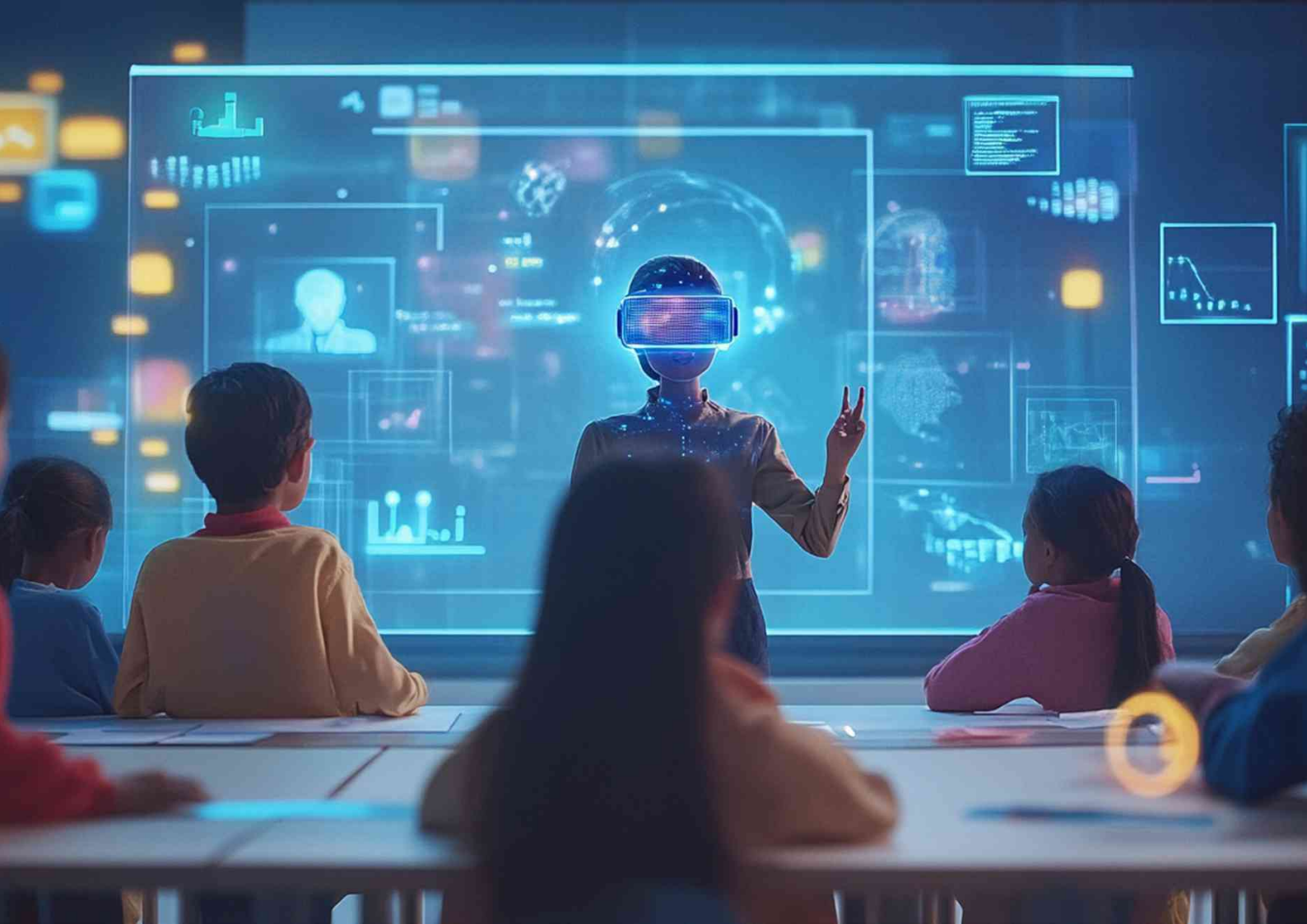
This is a self-paced course. You can schedule dedicated study hours in your calendar for about three hours a week. You should aim to complete one module each month to maintain steady progress. Although the maximum allowed duration is six months, it is more advantageous to complete all three modules within three months.

**Are the AI tools demonstrated in the course free to use, or will I need paid subscriptions?**

The AI tools showcased use a freemium model, giving users access to a range of features at no cost while reserving advanced features for paid subscribers. A thorough comparison of the tools detailed in the resources (PDF and videos) highlights the distinction between free and premium features, helping you make informed decisions that align with your needs.

**Will I get hands-on practice with tools like ChatGPT, Gemini, or other LLMs during the course?**

The course resources offer in-depth insights and comprehensive step-by-step guidance on effectively utilising LLM and AI platforms. You can use the ready-made prompts and rubrics for hands-on practice at your convenience.



## About II-TED:

The International Institute for Teacher Education and Development is committed to transforming the way educators teach and inspire. We offer flexible and impactful training programs that enhance skills, foster growth, and enable transformative classroom experiences. Aligned with India's National Education Policy 2020 and global best practices. At II-TED we have courses that cover key areas like Child Growth, Pedagogical Studies, Curriculum Design, Educational Assessment, and School Leadership.

## Contact us:

Email: [contact@iited.com](mailto:contact@iited.com) | Phone no: 8828840749

Website: [www.iited.com](http://www.iited.com)